

**ANNUAL REPORT
ON POWER FLOWS IN THE TRANSMISSION SYSTEM
OF BOSNIA AND HERZEGOVINA IN 2014**

Sarajevo, February 2015

This Report presents power flows in the transmission system in B&H for 2014. It includes main review of power flows and specific indicators and their comparison with the previous year.

Electricity balance in the transmission system

Total amount of 17.681 GWh of electricity was available on the transmission network of B&H in 2014. It was produced 14.472 GWh and another 47 GWh of electricity is injected from distribution networks. From the neighbouring systems it was received 3.162 GWh of electricity.

Out of totally available electricity on transmission network, distribution companies took over 9.100 GWh, customers directly connected to the transmission system took over 2.280 GWh, neighbouring systems were delivered with 5.998 GWh, while transmission losses amounted 304 GWh, which makes 1,72% of totally available electricity on transmission network. During 2014, the only reversible HPP in B&H PSHP Čapljina hasn't worked in the pumping mode.

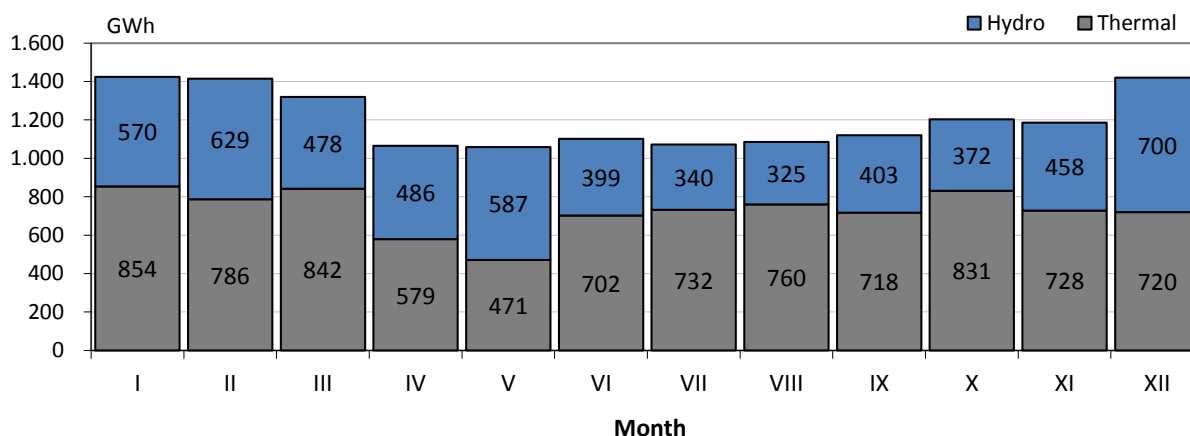
Electricity consumption in B&H in 2014 was for 3% smaller than consumption in 2013.

Electricity generation in the transmission system

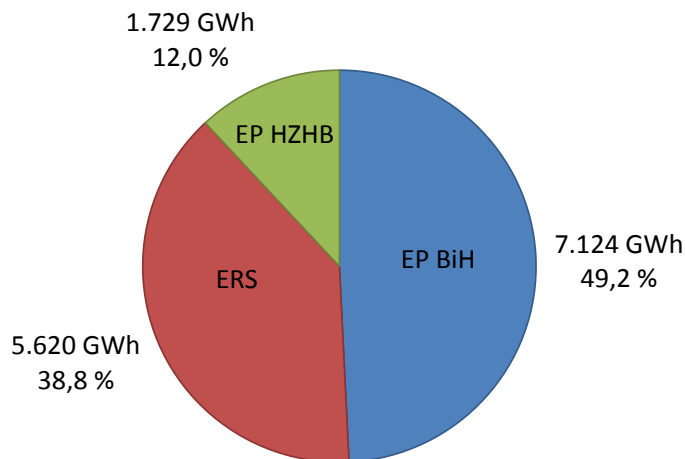
Out of totally produced 14.472 GWh of electricity in transmission system in 2014, Hydro Power Plants produced 5.747 GWh, i.e. 39,7%, and Thermal Power Plants produced 8.725 GWh, i.e. 60,3%. Hydro Power Plants in 2014 produced 17,6% less electricity in comparison to 2013 and Thermal Power Plants produced the same amount of electricity as was the case in 2013. It resulted with 7,9% of electricity less in the transmission system than in 2013.

The following diagrams show the structure of electricity generation through months for 2014 from facilities directly connected to transmission network of B&H as well as the generation companies' contribution in electricity generation in B&H.

Monthly overview of the net generation mix in 2014



Companies' shares in the electricity generation

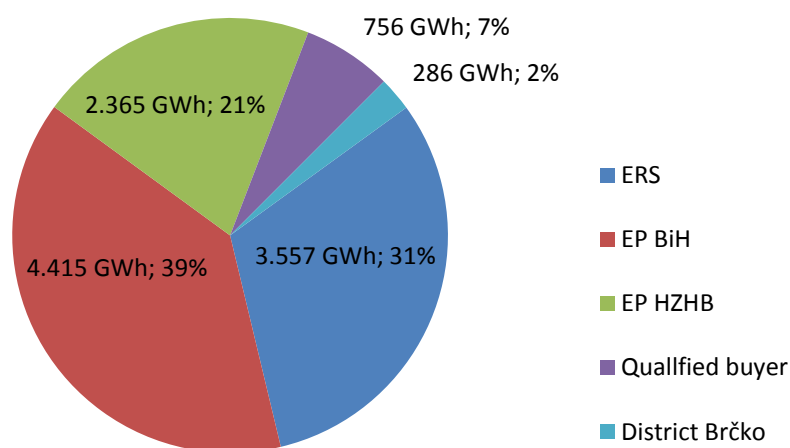


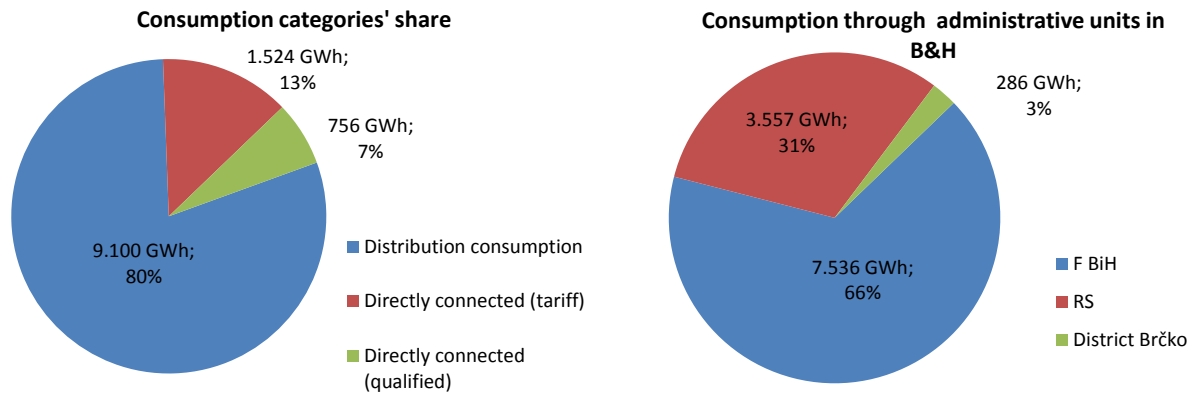
Electricity consumption in the transmission system

Electricity consumption in the transmission system of B&H in 2014 amounted 11.379 GWh and was 3% smaller in comparison to 2013. PSHHP Čapljina has not been working in pumping regime during 2014. Distribution companies took over 9.100 GWh and customers directly connected to the transmission network took over 2.280 GWh of electricity. Out of that amount, the qualified buyers took over 756 GWh of electricity, which made 6,64 % of overall electricity consumption on the transmission network of B&H.

The following diagrams show licensed companies' consumption as well as the structure of consumption regarding consumption categories and administrative units in B&H.

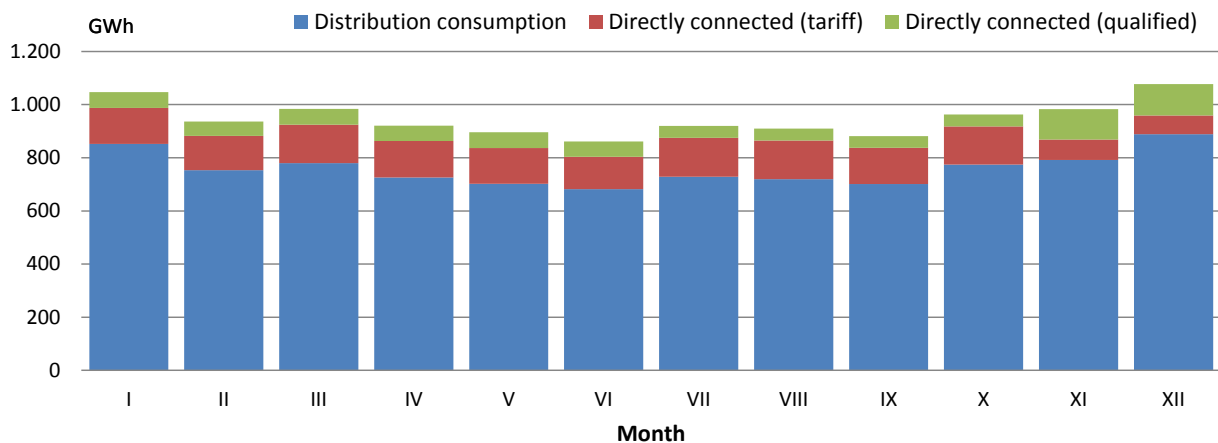
Electrical consumption in B&H in 2014- transmission network





The highest monthly consumption of 1.077 GWh on the transmission level in B&H in 2014 was measured in December 2014. The smallest monthly consumption was in June amounting 862 GWh of electricity. The following diagram shows monthly consumptions in the transmission system in B&H.

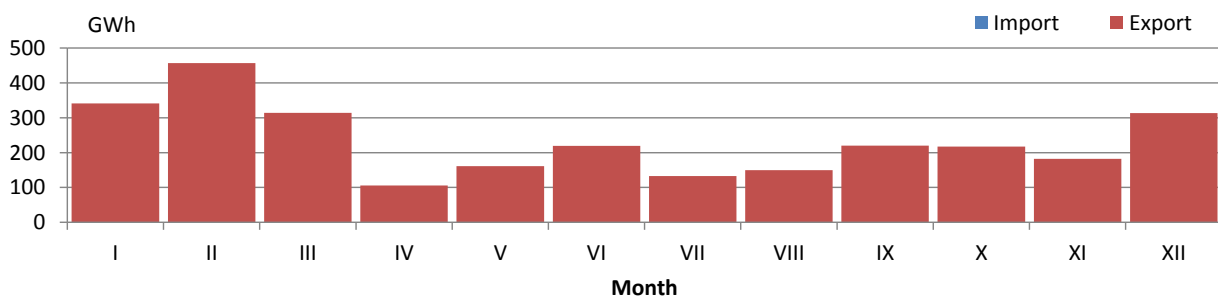
The structure of electricity consumption in B&H through the months in 2014



Nominated power exchange with the neighbouring systems

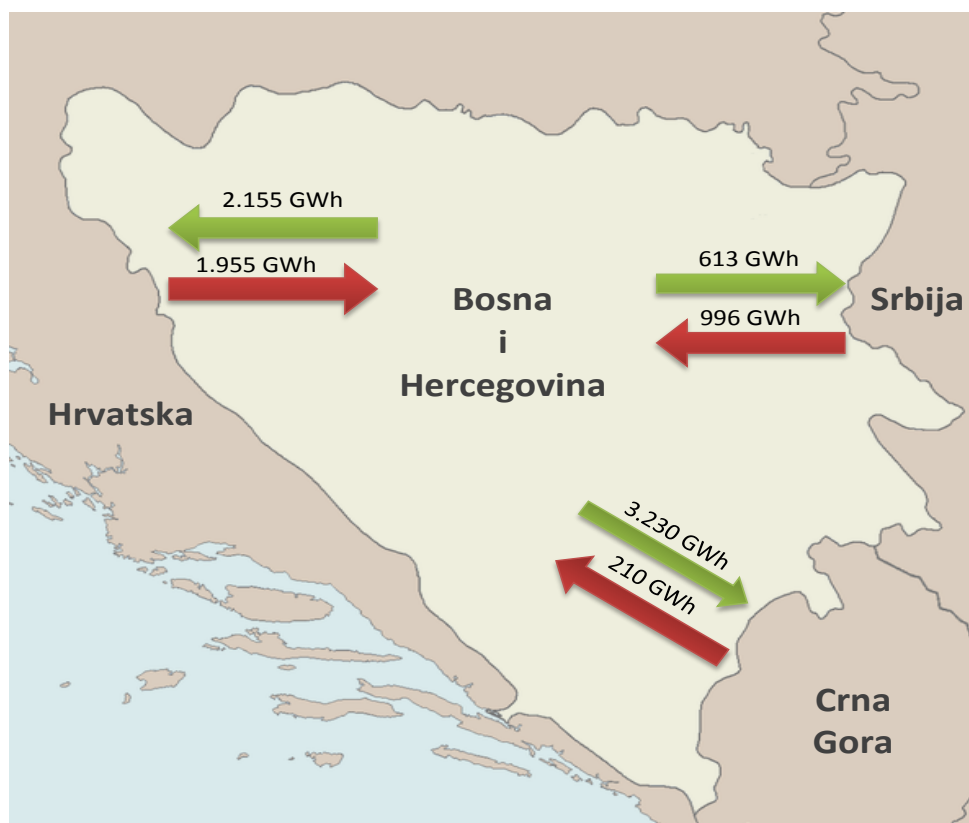
According to the nominated exchange programmes, 2.405 GWh of electricity was imported and 5.219 GWh was exported from the power system of B&H during 2014. Out of that amount, 1.448 GWh of electricity was transited over the B&H transmission network. The balance amount of 2.815 GWh of exported energy is a significant increase of 24% compared to 2013.

Schedule exchange balance in 2014



Crossborder power flows

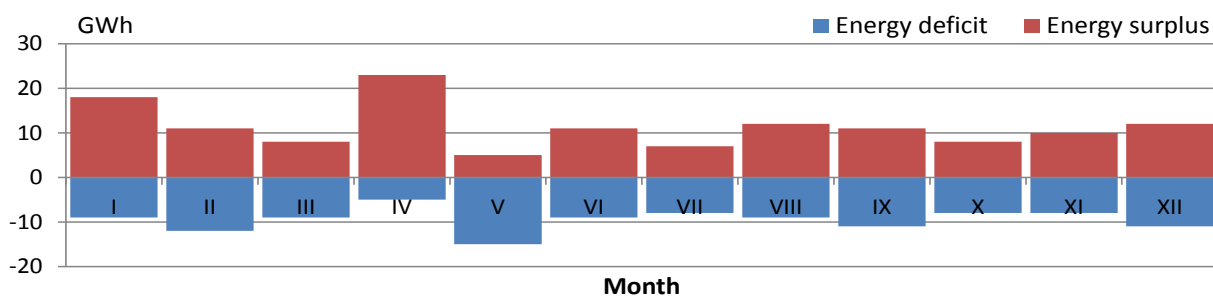
Physical power flows on tie-lines in 2014 provide the balance of B&H Control Area in amount of 2.836 GWh exported energy. From the neighbouring systems 3.162 GWh were injected in BiH transmission system and other systems were delivered 5.998GWh of electricity. Power flows on the borders with neighbouring systems were such that in 2014 on the border with Serbia 383 GWh were injected in BiH transmission system while on the border with Croatia 200 GWh were delivered and on the border with Montenegro 3.020 GWh were delivered.



Deviations from the nominated exchange programmes

Unintentional deviations from the nominated exchange programmes in 2014 were in total 114 GWh for the hours when there was deficit registered and 136 GWh for the hours when energy surplus is registered in B&H Control Area. Maximum hourly electricity deficit in amount of 232 MWh/h was registered in June and electricity surplus of 197 MWh/h in April 2014.

Monthly overview of the unintentional deviations of CA B&H in 2014



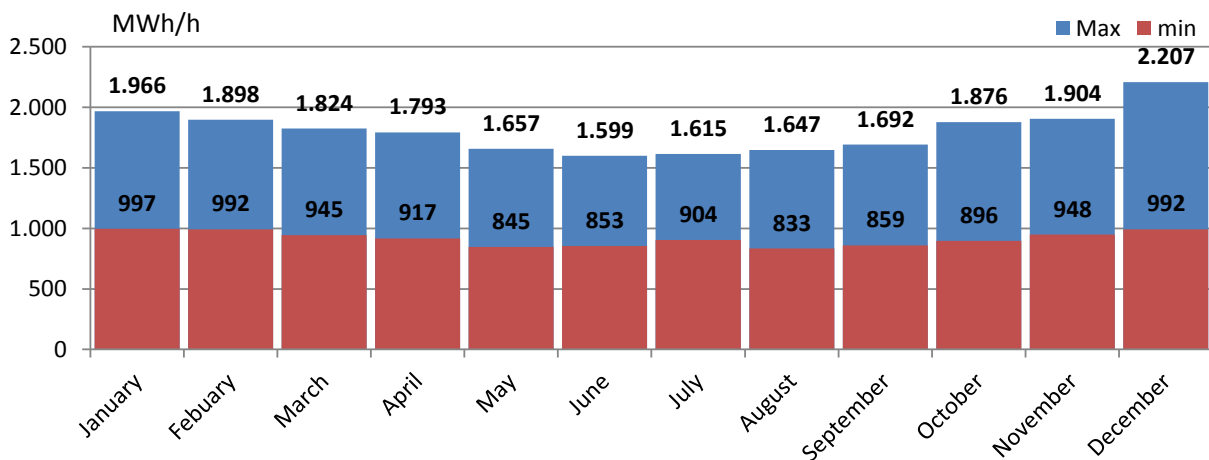
Specific values of hourly and daily consumption

Maximum hourly load in 2014 in amount of 2.207 MWh/h was realised on December 31th in 18th hour and this is the largest hourly consumption in BiH since 1995. It is important to emphasise that 31st December 2014 was a specific day with rather low temperatures in entire BiH. Maximum daily consumption in amount of 42.647 MWh of electricity was realised on December 31th, too. Minimum hourly load in amount of 833 MWh is registered on August 5th in the 6th hour and smallest daily consumption in amount of 28.067 MWh on May 1st, 2014 (Labour Day).

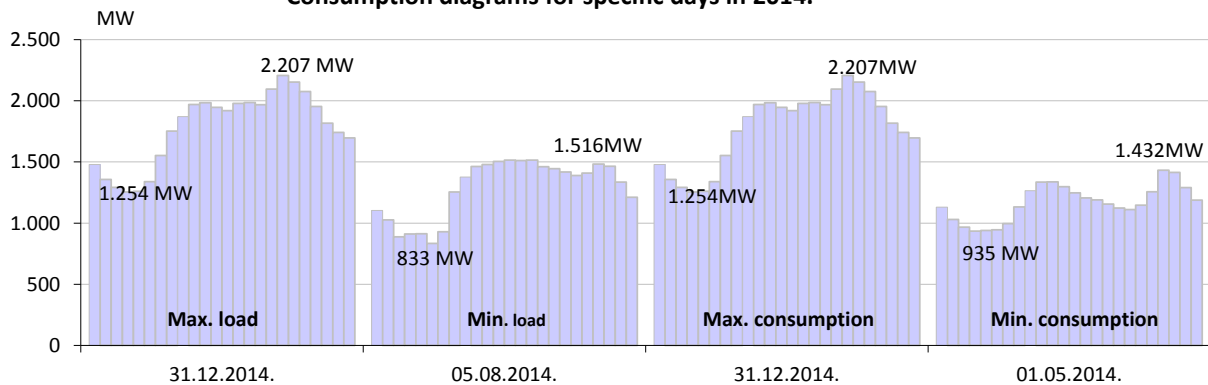
Specific consumption in 2014

<i>Max. hourly load</i>			<i>Min. hourly load</i>			<i>Max. daily consumption</i>		<i>Min. daily consumption</i>	
MWh	Day	Hour	MWh	Day	Hour	MWh	Day	MWh	Day
2.207	31.12.2014.	18:00	833	05.08.2014.	6:00	42.647	31.12.2014.	28.067	01.05.2014.

Monthly overview of the highest and lowest load in 2014



Consumption diagrams for specific days in 2014.



ELECTRICITY BALANCE FOR THE B&H TRANSMISSION SYSTEM IN 2014

	I	II	III	IV	V	VI	VII	VIII	IX	X	XI	2014	2014/2013
	GWh	GWh	GWh	GWh	GWh	GWh	GWh	GWh	GWh	GWh	GWh	GWh	%
Net generation													
(1) HPP	570.4	628.6	477.6	486.1	587.1	399.2	339.8	324.9	403.2	372.1	700.2	5,747.4	82.4%
(2) TPP	854.3	786.4	842.4	579.2	471.1	702.1	731.7	760.5	717.6	831.3	720.4	8,725.0	99.8%
(3) Generation TOTAL (1+2)	1,424.6	1,415.0	1,320.0	1,065.3	1,058.2	1,101.3	1,071.5	1,085.4	1,120.9	1,203.4	1,420.6	14,472.4	92.1%
(4) received from the distribution system	2.4	2.8	1.9	5.1	8.3	4.3	2.4	2.7	4.2	2.9	3.8	47.5	81.3%
Physical Inside Flows													
(5) Croatia	121.3	107.0	146.7	139.8	203.9	165.5	170.5	228.4	140.4	99.2	234.0	1,955.1	173.6%
(6) Serbia	132.9	88.1	129.2	168.5	65.9	45.9	81.6	67.7	41.0	84.4	61.2	996.2	65.4%
(7) Montenegro	18.5	17.0	8.3	22.7	12.4	12.4	11.1	10.0	20.6	36.8	16.4	210.3	40.7%
(8) Inside flows TOTAL (5-7)	272.7	212.0	284.3	331.0	282.3	223.8	263.2	306.0	202.0	220.4	311.6	252.4	99.8%
(9) AVAILABLE ENERGY (3+4+8)	1,699.7	1,629.9	1,606.2	1,401.3	1,348.8	1,329.4	1,337.1	1,394.2	1,327.1	1,426.6	1,501.6	17,681.4	93.4%
Consumption													
(10) Distribution companies	852.0	753.1	780.1	726.2	701.9	681.8	728.4	719.6	701.2	774.2	792.1	888.9	98.7%
(11) Directly connected customers	195.2	183.3	203.6	194.5	194.4	179.7	191.6	190.2	180.0	188.5	190.7	1,881.1	90.6%
(12) Consumption TOTAL (10+11)	1,047.2	936.4	983.7	920.7	896.3	861.5	920.0	909.8	881.2	962.7	982.8	11,379.2	97.0%
Physical Outside Flows													
(13) Croatia	291.0	289.5	184.9	177.4	120.0	142.5	129.6	95.0	154.5	271.1	119.0	180.3	51.2%
(14) Serbia	45.8	54.3	48.1	36.0	44.6	53.4	44.3	64.9	52.9	31.5	51.5	85.5	114.0%
(15) Montenegro	285.2	325.0	364.6	240.7	269.5	249.1	221.4	298.7	214.7	135.8	324.3	3,230.1	152.5%
(16) Outside flows TOTAL (13-15)	622.1	668.8	597.6	454.2	434.0	445.1	395.3	458.6	422.1	438.4	494.8	5,997.7	87.4%
(17) Consumption of Pump	0.0	0.0	0.0	0.0	0.0	0.0	0.0	0.0	0.0	0.0	0.0	0.0	85.7%
(18) REQUIRED ENERGY (12+16+17)	1,669.3	1,605.1	1,581.3	1,374.8	1,330.3	1,306.6	1,315.2	1,368.5	1,303.3	1,401.1	1,477.6	17,377.0	93.5%
Transmission losses													
(19) Transmission losses (9-18)	30.4	24.7	24.9	26.5	18.5	22.8	21.8	25.7	23.8	25.5	24.0	304.5	88.7%
(20) In relation to the available energy (19)/(9)	1.79%	1.52%	1.55%	1.89%	1.37%	1.71%	1.63%	1.84%	1.79%	1.79%	1.60%	1.72%	2.13%

* Including consumption of qualified buyers

NET GENERATION IN THE TRANSMISSION SYSTEM OF B&H IN 2014

GENERATION UNIT	I	II	III	IV	V	VI	VII	VIII	IX	X	XI	XII	2014	2014/13
	GWh	GWh	GWh	GWh	GWh	GWh	GWh	GWh	GWh	GWh	GWh	GWh	GWh	%
HPP Jablanica	88,9	98,6	77,8	52,9	81,2	45,8	37,7	40,9	56,5	65,0	50,4	93,9	789,5	87,6%
HPP Grabovica	35,0	36,2	27,9	20,0	29,1	16,7	13,3	14,4	20,8	23,2	23,0	34,8	294,6	80,7%
HPP Salakovac	60,5	64,0	38,9	30,0	42,7	22,4	15,2	17,3	29,7	28,4	42,1	57,0	448,2	77,8%
HPP Višegrad	70,5	64,2	54,4	122,7	148,3	93,5	51,6	44,9	73,0	74,5	75,5	126,8	1.000,0	82,2%
HPP Trebinje 1	27,7	45,4	43,2	39,2	40,7	39,3	44,7	36,3	15,2	23,5	29,2	37,0	421,3	60,2%
HPP Trebinje 2	0,0	0,0	0,0	0,0	0,0	0,0	0,0	0,0	0,0	0,0	0,0	0,0	0,0	
HPP Dubrovnik (G2)	72,5	74,1	68,7	64,0	55,4	45,0	68,1	55,7	35,5	15,3	74,6	84,2	713,1	114,8%
HPP Bočac	16,3	24,6	22,1	38,3	60,9	26,9	22,2	26,4	41,4	24,6	20,9	27,7	352,2	132,0%
HPP Rama	56,4	63,9	55,2	46,9	49,3	49,5	43,3	40,6	45,1	60,2	46,2	84,6	641,2	90,7%
HPP Mostar	31,8	34,6	23,0	19,0	24,7	14,7	11,2	12,3	18,3	17,9	24,6	31,8	263,7	88,1%
HPP Jajce 1	19,1	25,7	26,1	25,7	30,9	26,3	19,8	22,7	32,8	23,8	22,1	27,8	302,8	118,7%
HPP Jajce 2	6,8	8,3	8,1	8,4	10,7	9,7	7,7	7,3	8,1	8,7	8,0	9,7	101,5	114,5%
PS HPP Čapljina	48,7	33,4	4,6	6,3	0,5	4,2	1,6	2,4	14,3	0,6	13,6	42,5	172,8	24,2%
HPP Peć-Mlini	11,1	15,8	15,2	7,6	6,3	2,9	1,8	1,8	6,4	3,8	13,1	16,0	101,8	109,4%
HPP Mostarsko Blato*	25,1	40,0	12,5	5,0	6,4	2,3	1,6	1,9	6,2	2,6	15,0	26,3	144,8	85,8%
HPP TOTAL	570,4	628,6	477,6	486,1	587,1	399,2	339,8	324,9	403,2	372,1	458,3	700,2	5.747,4	82,4%
TPP Tuzla	280,1	341,7	337,2	229,5	187,2	247,9	320,6	325,9	283,0	362,8	295,5	286,2	3.497,6	112,2%
TPP Kakanj	238,5	175,8	184,4	189,5	134,5	250,4	235,3	198,8	113,5	122,0	124,6	126,5	2.093,8	93,8%
TPP Ugljevik	177,6	138,0	162,1	0,0	0,0	116,3	161,7	127,2	180,3	186,1	167,2	175,0	1.591,4	98,4%
TPP Gacko	158,1	130,9	158,8	160,3	149,5	87,5	14,2	108,5	140,8	160,4	140,6	132,6	1.542,3	87,0%
TPP TOTAL	854,3	786,4	842,4	579,2	471,1	702,1	731,7	760,5	717,6	831,3	727,9	720,4	8.725,0	99,8%
GENERATION TOTAL	1.424,6	1.415,0	1.320,0	1.065,3	1.058,2	1.101,3	1.071,5	1.085,4	1.120,9	1.203,4	1.186,2	1.420,6	14.472,4	92,1%

ELECTRICITY CONSUMPTION IN THE TRANSMISSION SYSTEM OF B&H IN 2014

CONSUMPTION	I	II	III	IV	V	VI	VII	VIII	IX	X	XI	XII	2014	2014/2013
	GWh	GWh	GWh	GWh	GWh	GWh	GWh	GWh	GWh	GWh	GWh	GWh	GWh	%
Elektrokraina	166,8	153,0	155,3	138,5	138,0	129,2	135,3	128,7	132,2	145,9	154,5	171,9	1.749,3	97,4%
Elektrodoboj	55,8	48,9	46,7	46,6	44,1	44,9	51,3	48,3	47,9	52,5	51,6	54,4	593,0	97,2%
Elektrobljevljina	64,7	56,5	60,3	56,9	53,6	52,5	57,3	55,5	53,6	58,8	59,5	65,9	695,0	105,9%
Elektro distribucija Pale	28,6	23,7	25,7	23,1	22,3	21,1	22,6	24,0	24,1	26,2	26,8	29,6	297,7	99,4%
Elektrohercegovina	19,8	17,2	18,6	16,6	16,7	15,5	15,8	16,7	16,2	17,0	17,8	20,6	208,4	104,6%
RiTE ERS (Ugljevik i Gacko)	0,9	1,4	0,7	1,0	1,1	1,6	1,8	1,8	0,6	0,2	0,9	1,0	13,2	108,6%
ERS	336,5	300,7	307,3	282,7	275,8	264,8	284,0	275,0	274,6	300,7	311,1	343,4	3.556,7	99,5%
ED Sarajevo	130,1	110,9	118,8	110,9	105,3	100,2	102,7	101,8	102,8	115,3	120,5	136,5	1.355,8	98,8%
ED Tuzla	89,7	82,4	85,3	81,4	78,7	79,7	85,0	83,6	84,2	89,1	87,3	91,4	1.017,8	98,2%
ED Zenica	85,5	75,9	81,4	77,6	74,3	73,4	76,0	74,6	73,8	82,6	83,8	95,3	954,2	101,2%
ED Mostar	20,0	17,1	17,3	16,1	16,2	16,2	17,7	17,2	14,6	18,6	18,6	21,4	211,1	103,7%
ED Bihać	37,1	33,7	35,0	34,3	34,0	34,4	38,1	38,9	34,6	37,2	35,2	40,6	433,2	98,1%
Directly connected customers	33,3	35,4	38,6	36,3	37,6	34,5	40,5	39,3	35,4	37,3	39,4	35,3	443,0	98,7%
EPBiH	395,7	355,4	376,4	356,7	346,2	338,5	360,0	355,3	345,4	380,2	384,8	420,6	4.415,1	99,3%
ED Hercegovacko-Neretvanska	47,6	40,6	39,8	35,4	34,6	33,6	36,5	38,2	33,4	36,8	38,5	47,4	462,5	93,9%
ED Zapadnohercegovacka	26,5	23,6	24,4	22,2	22,1	20,8	22,4	22,7	21,5	23,2	24,3	27,6	281,2	90,6%
ED Herceg Bosanska	12,5	12,0	11,8	11,4	11,4	10,8	11,6	12,2	11,2	11,9	12,0	13,8	142,7	97,8%
ED Srednja Bosna	28,7	24,4	26,7	24,2	21,9	22,4	26,4	26,4	22,9	27,8	27,4	29,8	309,1	99,0%
ED Posavska	9,6	8,2	8,6	8,5	7,6	7,5	8,1	8,4	7,8	8,5	8,8	10,5	102,1	96,3%
Directly connected customers	101,5	92,7	104,8	99,6	96,1	86,0	104,7	104,5	100,8	106,3	36,5	34,2	1.067,6	91,1%
EPHZHB	226,3	201,6	216,1	201,3	193,8	181,1	209,5	212,5	197,5	214,5	147,4	163,4	2.365,1	93,2%
Aluminij (qualified buyer)	59,5	53,8	59,4	57,6	59,5	57,6	44,6	44,6	43,2	44,7	97,2	100,4	722,3	81,6%
District Brčko	29,1	24,9	24,4	22,4	21,0	19,5	21,7	22,4	20,4	22,6	25,7	32,1	286,4	99,2%
Consumption TOTAL	1.047,2	936,4	983,7	920,7	896,3	861,5	920,0	909,8	881,2	962,7	982,8	1.077,0	11.379,2	97,0%
Consumption of PSHHP Čapljina	0,0	0,0	0,0	0,0	0,0	0,0	0,0	0,0	0,0	0,0	0,0	0,0	0,0	85,7%
Overall Takeover	1.047,2	936,4	983,7	920,7	896,3	861,5	920,0	909,8	881,2	962,7	982,8	1.077,0	11.379,2	97,0%

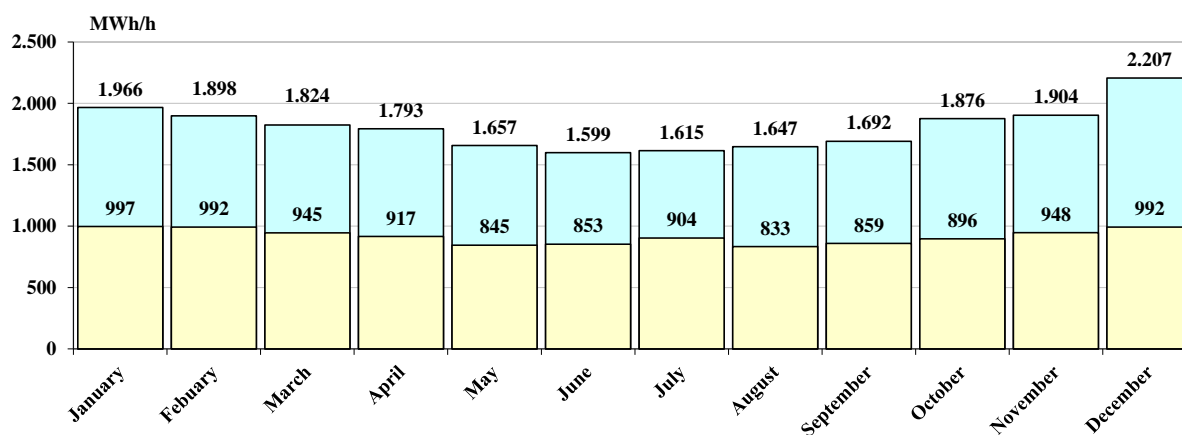
Specific data on hourly and daily consumption in 2014

Month	Max load (hourly)			Min load (hourly)			Max daily consumption		Min daily consumption	
	MWh/h	Day	Hour	MWh/h	Day	Hour	MWh	Day	MWh	Day
January	1.966	28.1.2014	18	997	6.1.2014	4	39.654	28.1.2014	33.219	1.1.2014
February	1.898	5.2.2014	19	992	17.2.2014	4	37.689	5.2.2014	33.264	16.2.2014
March	1.824	5.3.2014	19	945	31.3.2014	4	36.119	5.3.2014	30.195	30.3.2014
April	1.793	17.4.2014	21	917	28.4.2014	4	36.201	17.4.2014	30.200	27.4.2014
May	1.657	5.5.2014	21	845	19.5.2014	4	32.470	5.5.2014	28.067	1.5.2014
June	1.599	12.6.2014	22	853	1.6.2014	6	32.278	12.6.2014	28.448	1.6.2014
July	1.615	24.7.2014	22	904	13.7.2014	6	32.443	25.7.2014	29.338	13.7.2014
August	1.647	11.8.2014	15	833	5.8.2014	6	32.610	13.8.2014	29.100	24.8.2014
September	1.692	25.9.2014	20	859	30.9.2014	4	32.113	26.9.2014	29.198	14.9.2014
October	1.876	30.10.2014	18	896	6.10.2014	5	35.865	30.10.2014	29.254	5.10.2014
November	1.904	26.11.2014	18	948	10.11.2014	4	37.310	27.11.2014	31.956	9.11.2014
December	2.207	31.12.2014	18	992	3.12.2014	4	42.647	31.12.2014	34.254	7.12.2014
2014	2.207	31.12.2014	18	833	5.8.2014	6	42.647	31.12.2014	28.067	1.5.2014

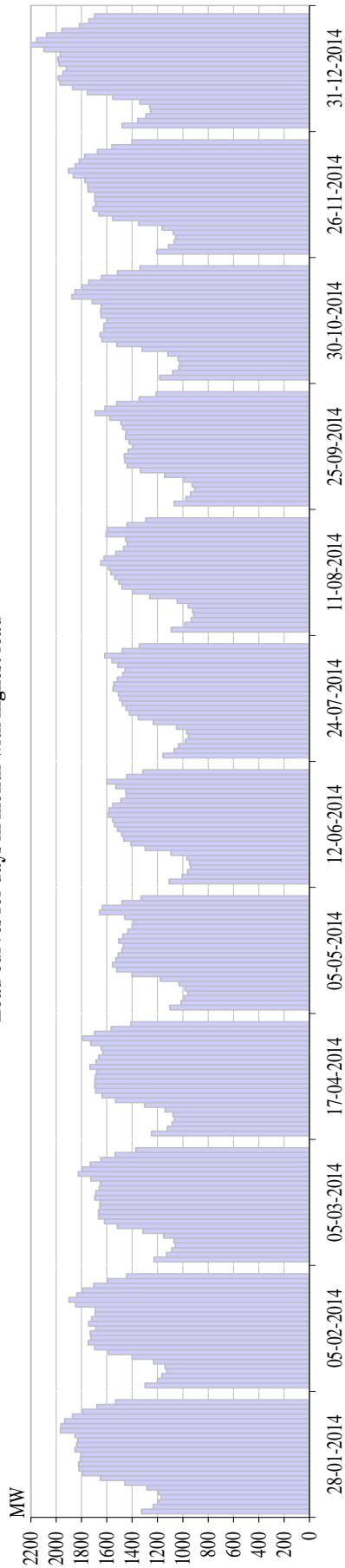
Specific values of electricity load in 2014

Highest load			Lowest load			Max daily consumption		Min daily consumption	
MWh	Day	Hour	MWh	Day	Hour	MWh	Day	MWh	Day
2.207	31.12.2014.	18:00	833	05.08.2014.	6:00	42.647	31.12.2014.	28.067	01.05.2014.

Monthly overview of the highest and lowest load in 2014



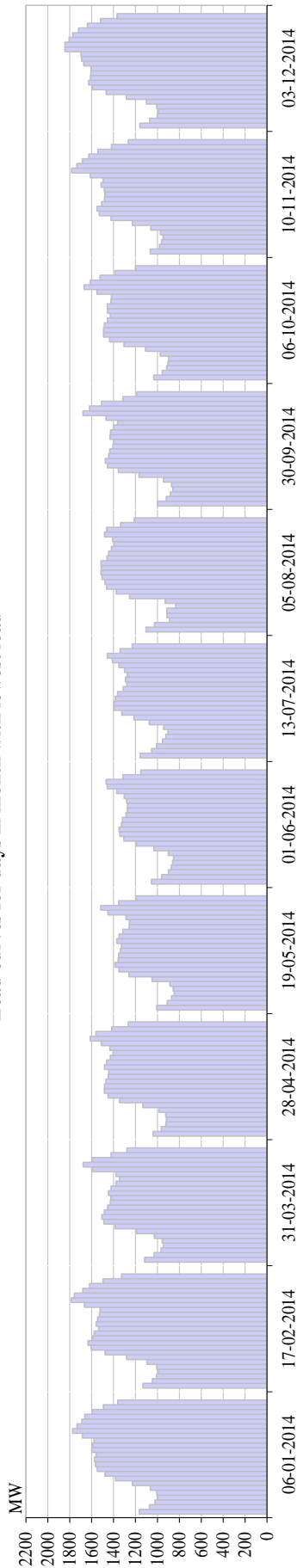
Load curves for days in month with highest load



Load curves for days in month with highest load

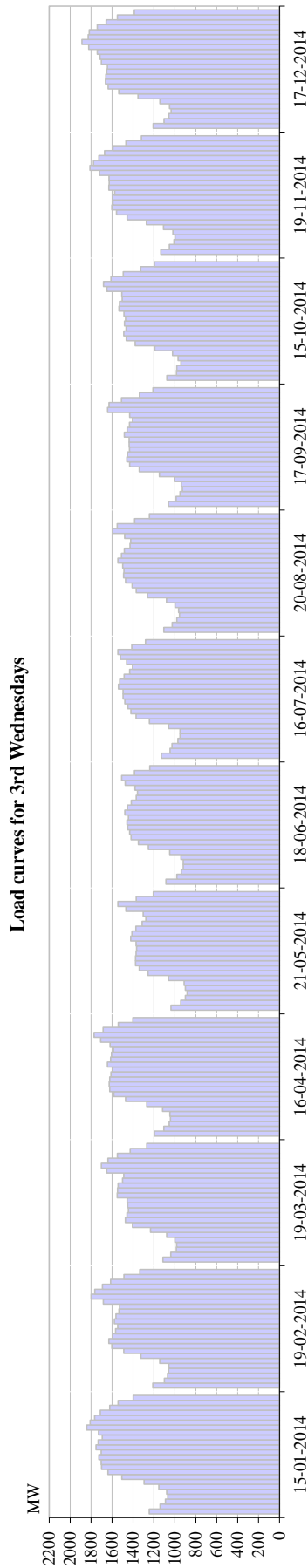
	1	2	3	4	5	6	7	8	9	10	11	12	13	14	15	16	17	18	19	20	21	22	23	24	Σ
January	1326	1.234	1.195	1.170	1.192	1.283	1.458	1.650	1.790	1.820	1.823	1.809	1.804	1.852	1.839	1.828	1.850	1.966	1.963	1.932	1.870	1.792	1.677	1.530	39.654
February	1.298	1.199	1.165	1.127	1.139	1.231	1.400	1.587	1.697	1.746	1.726	1.730	1.688	1.742	1.719	1.692	1.689	1.847	1.898	1.837	1.792	1.703	1.593	1.443	37.689
March	1.226	1.128	1.086	1.058	1.069	1.151	1.314	1.517	1.618	1.666	1.666	1.655	1.653	1.695	1.685	1.658	1.651	1.725	1.824	1.793	1.731	1.647	1.534	1.370	36.119
April	1.246	1.122	1.085	1.066	1.076	1.140	1.302	1.530	1.637	1.688	1.695	1.695	1.689	1.682	1.732	1.685	1.665	1.632	1.643	1.727	1.793	1.696	1.565	1.410	36.201
May	1.101	1.013	989	961	981	1.028	1.177	1.400	1.521	1.554	1.529	1.510	1.479	1.469	1.505	1.473	1.433	1.400	1.386	1.459	1.657	1.635	1.480	1.330	32.470
June	1.107	1.005	961	939	946	969	1.094	1.296	1.410	1.466	1.483	1.515	1.540	1.553	1.590	1.582	1.553	1.488	1.446	1.450	1.529	1.599	1.444	1.314	32.278
July	1.156	1.068	1.033	979	955	969	1.048	1.231	1.352	1.422	1.449	1.477	1.498	1.509	1.551	1.545	1.517	1.474	1.456	1.513	1.559	1.615	1.478	1.342	32.197
August	1.092	984	932	914	922	956	1.043	1.261	1.395	1.480	1.505	1.538	1.568	1.584	1.647	1.621	1.529	1.468	1.439	1.451	1.607	1.598	1.440	1.291	32.266
September	1.068	975	938	908	926	991	1.143	1.334	1.439	1.457	1.462	1.432	1.392	1.423	1.452	1.449	1.474	1.487	1.576	1.692	1.614	1.522	1.344	1.209	31.706
October	1.181	1.080	1.032	1.025	1.037	1.116	1.320	1.520	1.638	1.654	1.624	1.623	1.599	1.646	1.648	1.643	1.716	1.876	1.852	1.799	1.742	1.642	1.516	1.337	35.865
November	1.204	1.111	1.068	1.057	1.074	1.162	1.349	1.553	1.663	1.708	1.689	1.695	1.695	1.747	1.751	1.773	1.863	1.904	1.848	1.817	1.775	1.674	1.560	1.401	37.143
December	1.478	1.356	1.292	1.254	1.260	1.339	1.554	1.753	1.871	1.969	1.984	1.946	1.919	1.978	1.987	1.967	2.095	2.207	2.154	2.076	1.954	1.816	1.741	1.697	42.647

Load curves for days in month with lowest load



Load curves for days in month with lowest load

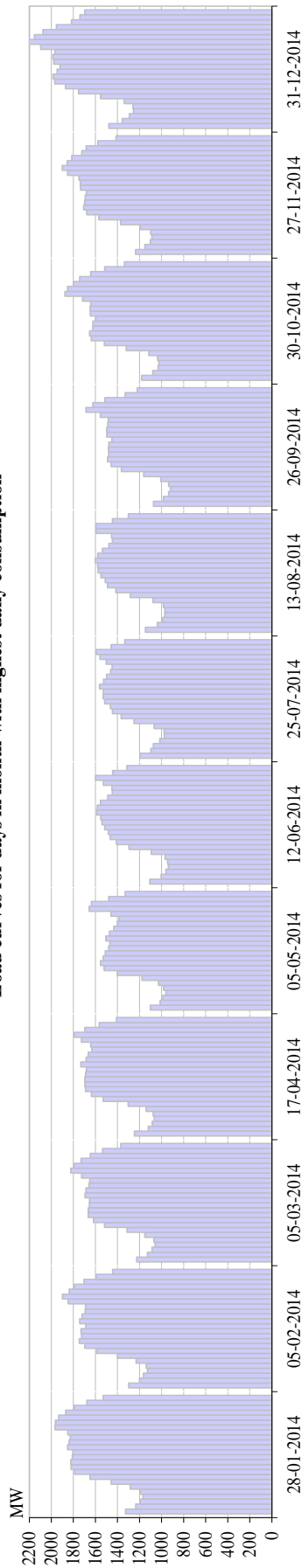
	1	2	3	4	5	6	7	8	9	10	11	12	13	14	15	16	17	18	19	20	21	22	23	24	Σ	
January	06-01-2014	1164	1074	1022	997	1006	1064	1229	1382	1477	1549	1565	1574	1560	1600	1591	1578	1685	1775	1733	1689	1662	1596	1494	1361	34,427
February	17-02-2014	1132	1046	1008	992	1005	1095	1282	1478	1603	1634	1590	1577	1535	1560	1545	1528	1524	1666	1785	1758	1680	1619	1497	1327	34,467
March	31-03-2014	1117	1029	966	945	957	1029	1191	1385	1487	1507	1484	1454	1430	1424	1447	1423	1379	1346	1379	1591	1677	1593	1424	1278	31,942
April	28-04-2014	1039	966	922	917	925	983	1133	1346	1451	1485	1483	1470	1449	1443	1484	1464	1429	1404	1436	1511	1612	1562	1415	1266	31,593
May	19-05-2014	1006	910	871	845	856	886	1049	1258	1351	1387	1358	1337	1327	1370	1349	1314	1258	1256	1287	1453	1516	1352	1191	29,139	
June	01-06-2014	1054	961	898	872	861	853	900	1031	1191	1307	1343	1349	1327	1320	1286	1275	1272	1282	1303	1371	1457	1467	1316	1152	28,448
July	13-07-2014	1157	1052	1008	952	922	904	943	1075	1214	1326	1396	1383	1364	1313	1313	1279	1291	1276	1300	1351	1411	1457	1340	1229	29,338
August	05-08-2014	1104	1026	888	912	913	833	929	1254	1376	1464	1479	1505	1514	1511	1516	1461	1446	1419	1390	1409	1483	1464	1336	1211	30,842
September	30-09-2014	998	918	881	859	872	944	1168	1356	1455	1475	1445	1435	1405	1400	1433	1428	1400	1363	1468	1679	1619	1511	1315	1188	31,016
October	06-10-2014	1033	954	915	903	896	973	1108	1304	1437	1491	1491	1485	1456	1430	1455	1456	1425	1420	1551	1669	1612	1524	1387	1199	31,576
November	10-11-2014	1066	981	962	948	972	1061	1228	1424	1530	1550	1508	1484	1480	1485	1514	1495	1612	1783	1736	1685	1626	1543	1419	1265	33,356
December	03-12-2014	1159	1072	1001	992	1005	1099	1283	1468	1592	1628	1610	1608	1606	1672	1692	1698	1843	1844	1805	1773	1720	1639	1519	1368	35,697



Load curves for 3rd Wednesdays

	1	2	3	4	5	6	7	8	9	10	11	12	13	14	15	16	17	18	19	20	21	22	23	24	Σ
January	1245	1.141	1.090	1.068	1.079	1.153	1.294	1.506	1.638	1.701	1.704	1.726	1.703	1.754	1.732	1.694	1.729	1.841	1.809	1.767	1.713	1.623	1.543	1.397	36.651
February	1.210	1.101	1.070	1.060	1.058	1.145	1.324	1.488	1.602	1.630	1.595	1.567	1.546	1.578	1.562	1.533	1.529	1.683	1.799	1.765	1.692	1.613	1.486	1.334	34.973
March	1.115	1.039	986	982	1.000	1.078	1.233	1.404	1.472	1.457	1.443	1.451	1.456	1.550	1.548	1.542	1.500	1.487	1.652	1.702	1.639	1.548	1.427	1.269	32.978
April	1.196	1.105	1.054	1.043	1.047	1.118	1.268	1.471	1.583	1.622	1.627	1.622	1.610	1.595	1.644	1.614	1.606	1.586	1.619	1.709	1.772	1.684	1.541	1.401	35.136
May	1.038	944	899	882	899	911	1.061	1.256	1.340	1.376	1.376	1.371	1.365	1.370	1.421	1.409	1.372	1.312	1.277	1.303	1.468	1.544	1.369	1.206	29.770
June	1.085	980	939	920	919	942	1.049	1.253	1.349	1.419	1.432	1.450	1.458	1.444	1.478	1.452	1.416	1.368	1.357	1.381	1.474	1.508	1.385	1.239	30.698
July	1.129	1.046	1.028	970	950	951	1.059	1.244	1.370	1.421	1.448	1.477	1.495	1.494	1.539	1.527	1.485	1.432	1.404	1.460	1.520	1.544	1.412	1.281	31.685
August	1.105	1.025	981	956	963	998	1.079	1.261	1.369	1.408	1.471	1.490	1.486	1.498	1.545	1.510	1.483	1.429	1.421	1.480	1.596	1.550	1.384	1.243	31.730
September	1.062	988	951	928	939	1.005	1.148	1.341	1.432	1.458	1.453	1.433	1.437	1.437	1.483	1.456	1.434	1.405	1.432	1.642	1.629	1.511	1.338	1.209	31.550
October	1.077	985	982	943	969	1.022	1.192	1.379	1.465	1.489	1.466	1.481	1.470	1.486	1.534	1.528	1.504	1.507	1.649	1.682	1.611	1.493	1.326	1.195	32.435
November	1.134	1.053	1.009	998	1.018	1.110	1.272	1.455	1.558	1.601	1.592	1.596	1.575	1.631	1.628	1.629	1.721	1.811	1.777	1.725	1.671	1.591	1.467	1.319	34.942
December	1.207	1.103	1.058	1.035	1.051	1.143	1.353	1.536	1.638	1.663	1.660	1.651	1.645	1.702	1.716	1.742	1.823	1.887	1.828	1.817	1.741	1.656	1.548	1.387	36.592

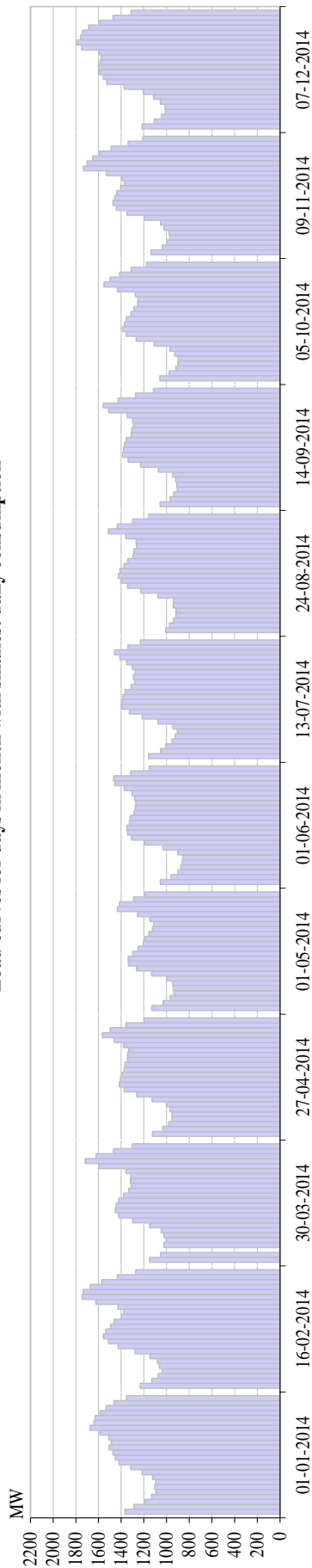
Load curves for days in month with highest daily consumption



Load curves for days in month with highest daily consumption

	1	2	3	4	5	6	7	8	9	10	11	12	13	14	15	16	17	18	19	20	21	22	23	24	Σ	
January	1326	1234	1195	1170	1192	1283	1458	1680	1790	1820	1823	1809	1804	1852	1839	1828	1850	1966	1963	1932	1870	1792	1792	1677	1.550	39.654
February	1298	1199	1165	1127	1139	1231	1400	1587	1697	1746	1726	1730	1688	1742	1719	1692	1689	1847	1898	1837	1792	1703	1703	1593	1.443	37.689
March	1226	1128	1086	1058	1069	1151	1314	1517	1618	1666	1666	1655	1653	1695	1685	1658	1651	1725	1824	1793	1731	1647	1534	1370	1.370	36.119
April	1246	1122	1085	1066	1076	1140	1302	1530	1637	1688	1688	1695	1689	1682	1732	1685	1665	1632	1643	1727	1793	1696	1565	1410	1.410	36.201
May	1101	1013	989	961	981	1028	1177	1400	1521	1554	1529	1510	1479	1469	1505	1473	1433	1400	1386	1459	1657	1635	1480	1330	1.330	32.470
June	1107	1005	961	939	946	969	1094	1296	1410	1466	1483	1515	1540	1553	1590	1582	1553	1488	1446	1450	1529	1599	1444	1314	1.314	32.278
July	1197	1096	1074	1016	975	977	1068	1250	1367	1445	1464	1515	1529	1528	1562	1526	1499	1462	1449	1501	1559	1594	1457	1334	1.334	32.443
August	1146	1038	989	971	970	984	1078	1283	1415	1491	1511	1549	1576	1579	1599	1579	1536	1479	1445	1453	1595	1595	1446	1302	1.302	32.610
September	1073	984	935	921	935	1008	1163	1364	1457	1491	1479	1481	1478	1450	1496	1498	1488	1484	1555	1685	1799	1742	1642	1514	1.330	32.113
October	1181	1080	1032	1025	1037	1116	1320	1520	1638	1654	1624	1623	1599	1646	1648	1643	1716	1876	1852	1799	1742	1642	1516	1337	1.337	35.865
November	1236	1152	1102	1088	1099	1193	1371	1568	1678	1706	1698	1693	1683	1736	1737	1749	1851	1900	1856	1815	1724	1685	1577	1413	1.413	37.310
December	1478	1356	1292	1254	1260	1339	1554	1753	1871	1969	1984	1946	1919	1978	1987	1967	2095	2207	2154	2076	1954	1816	1741	1.697	1.697	42.647

Load curves for days in month with smallest daily consumption



Load curves for days in month with smallest daily consumption

	1	2	3	4	5	6	7	8	9	10	11	12	13	14	15	16	17	18	19	20	21	22	23	24	Σ
January	1367	1286	1189	1131	1091	1103	1096	1121	1215	1316	1417	1452	1472	1506	1486	1507	1586	1676	1640	1628	1585	1532	1463	1352	33,219
February	1232	1129	1073	1036	1062	1080	1145	1277	1426	1511	1555	1536	1493	1461	1397	1377	1428	1623	1744	1733	1671	1570	1432	1271	33,264
March	1148	1052	0	1023	1004	1021	1046	1149	1300	1422	1451	1444	1421	1378	1333	1312	1319	1312	1357	1598	1716	1621	1466	1301	30,195
April	1123	1033	979	952	952	969	1000	1127	1263	1372	1417	1405	1393	1374	1366	1343	1343	1334	1380	1459	1565	1495	1358	1198	30,200
May	1130	1029	967	935	939	946	996	1132	1265	1335	1336	1297	1248	1206	1189	1155	1123	1111	1147	1256	1432	1414	1291	1188	28,067
June	1054	961	898	872	861	853	900	1031	1191	1307	1343	1349	1327	1320	1286	1275	1272	1282	1303	1371	1457	1467	1316	1152	28,448
July	1157	1052	1008	952	922	904	943	1075	1214	1326	1396	1394	1383	1364	1313	1279	1291	1276	1300	1351	1411	1457	1340	1229	29,338
August	1006	973	939	917	917	942	937	1074	1226	1345	1402	1424	1409	1375	1342	1296	1287	1264	1268	1359	1513	1436	1297	1155	29,100
September	1056	967	937	905	908	919	945	1071	1229	1338	1386	1378	1372	1357	1310	1305	1293	1299	1345	1510	1557	1425	1273	1114	29,198
October	1060	975	917	900	898	928	970	1107	1266	1355	1389	1370	1354	1315	1288	1255	1252	1275	1432	1551	1498	1413	1311	1177	29,254
November	1137	1039	999	974	976	1023	1052	1194	1348	1442	1471	1456	1439	1404	1371	1393	1528	1731	1699	1651	1595	1488	1338	1208	31,956
December	1216	1108	1044	1009	1012	1054	1115	1202	1373	1526	1556	1591	1600	1585	1575	1590	1747	1795	1758	1740	1686	1589	1472	1313	34,254

SCHEDULED PROGRAMS WITH NEIGHBOURING TSOs

SCHEDULED FLOWS	I	II	III	IV	V	VI	VII	VIII	IX	X	XI	XII	2014
	GWh	GWh	GWh	GWh	GWh	GWh	GWh	GWh	GWh	GWh	GWh	GWh	GWh
BiH <- HR (HOPS)	82,4	28,0	45,0	71,8	148,7	129,8	150,7	163,6	180,7	84,6	136,2	119,3	1.340,8
BiH <- SR (EMS)	51,2	34,7	78,5	118,2	69,3	56,9	72,2	72,8	37,4	82,6	80,8	80,4	834,9
BiH <- CG (CGES)	17,8	45,0	32,4	27,2	13,2	33,2	13,0	5,4	3,5	12,2	8,4	17,6	228,8
(1) Inside	151,3	107,7	155,9	217,1	231,2	219,9	235,9	241,8	221,5	179,4	225,4	217,2	2.404,5
BiH -> HR (HOPS)	169,8	250,6	153,4	146,9	93,2	130,0	95,2	88,9	91,4	142,3	96,1	158,6	1.616,4
BiH -> SR (EMS)	158,9	146,8	127,8	78,4	142,6	118,8	70,8	103,5	100,1	104,7	137,7	186,8	1.476,9
BiH -> CG (CGES)	163,8	167,3	188,8	97,9	156,8	190,2	202,8	199,2	250,1	150,1	173,9	185,0	2.125,9
(2) Outside	492,5	564,7	470,0	323,2	392,6	439,0	368,9	391,7	441,6	397,0	407,6	530,4	5.219,3
(3) Exchange balance (2)-(1)	341,2	457,0	314,2	106,1	161,4	219,1	132,9	149,9	220,0	217,6	182,2	313,1	2.814,7
Balance HR (HOPS)	87,4	222,6	108,4	75,1	-55,5	0,2	-55,5	-74,7	-89,2	57,7	-40,1	39,3	275,6
Balance SR (EMS)	107,7	112,1	49,3	-39,7	73,3	61,9	-1,4	30,7	62,7	22,2	56,9	106,4	642,0
Balance CG (CGES)	146,1	122,3	156,5	70,7	143,6	157,1	189,9	193,8	246,6	137,8	165,4	167,4	1.897,1
Transit	106,6	78,2	89,6	109,5	146,6	122,4	144,1	193,4	168,3	66,9	118,7	103,4	1.447,8

PHYSICAL FLOWS IN 2014

PHYSICAL FLOWS	I	II	III	IV	V	VI	VII	VIII	IX	X	XI	XII	2014
	GWh	GWh	GWh	GWh	GWh	GWh	GWh	GWh	GWh	GWh	GWh	GWh	GWh
BiH <- HR (HOPS)	121,3	107,0	146,7	139,8	203,9	165,5	170,5	228,4	140,4	99,2	234,0	198,5	1.955,1
BiH <- SR (EMS)	132,9	88,1	129,2	168,5	65,9	45,9	81,6	67,7	41,0	84,4	61,2	29,8	996,2
BiH <- CG (CGES)	18,5	17,0	8,3	22,7	12,4	12,4	11,1	10,0	20,6	36,8	16,4	24,1	210,3
(1) Inside flows	272,7	212,0	284,3	331,0	282,3	223,8	263,2	306,0	202,0	220,4	311,6	252,4	3.161,6
BiH -> HR (HOPS)	291,0	289,5	184,9	177,4	120,0	142,5	129,6	95,0	154,5	271,1	119,0	180,3	2.154,8
BiH -> SR (EMS)	45,8	54,3	48,1	36,0	44,6	53,4	44,3	64,9	52,9	31,5	51,5	85,5	612,9
BiH -> CG (CGES)	285,2	325,0	364,6	240,7	269,5	249,1	221,4	298,7	214,7	135,8	324,3	301,0	3.230,1
(2) Outside flows	622,1	668,8	597,6	454,2	434,0	445,1	395,3	458,6	422,1	438,4	494,8	566,8	5.997,7
(3) Balance (2) - (1)	349,4	456,7	313,4	123,2	151,7	221,3	132,1	152,6	220,0	218,0	183,3	314,4	2.836,2
Balance HR (HOPS)	169,7	182,5	38,2	37,6	-84,0	-23,0	-40,9	-133,4	14,1	171,9	-114,9	-18,2	199,6
Balance SR (EMS)	-87,1	-33,8	-81,1	-132,5	-21,4	7,5	-37,2	-2,7	11,9	-52,9	-9,7	55,7	-383,3
Balance CG (CGES)	266,8	308,1	356,3	218,1	257,0	236,7	210,3	288,7	194,1	99,0	307,9	276,9	3.019,9

Unintentional deviations in 2014

Month	Deviation - deficit			Deviation - surplus			Deviation - TOTAL		
	Max MWh/h	Average MWh/h	Total MWh	Max MWh/h	Average MWh/h	Total MWh	Max MWh/h	Average MWh/h	Total MWh
January	-148	-31	-9.286	171	39	17.546	171	11	8.260
February	-184	-33	-11.660	125	35	11.386	-184	0	-274
March	-99	-21	-8.659	100	25	8.352	100	0	-307
April	-78	-23	-4.689	197	44	22.886	197	25	18.197
May	-141	-29	-14.858	117	23	5.382	-141	-13	-9.476
June	-232	-28	-8.695	170	26	10.890	-232	3	2.196
July	-106	-21	-8.282	105	21	7.324	-106	-1	-957
August	-189	-28	-9.164	186	29	11.892	-189	4	2.729
September	-121	-29	-10.748	175	30	10.514	175	0	-233
October	-91	-22	-8.443	89	22	7.976	-91	-1	-466
November	-120	-25	-8.242	178	26	10.026	178	2	1.784
December	-160	-30	-11.403	123	32	11.685	-160	0	282
2014	-226	-33	-157.732	275	33	138.410	275	-2	21.735